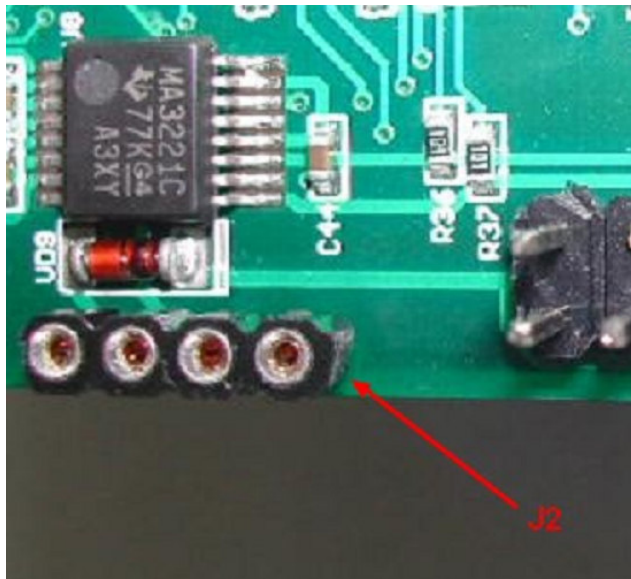
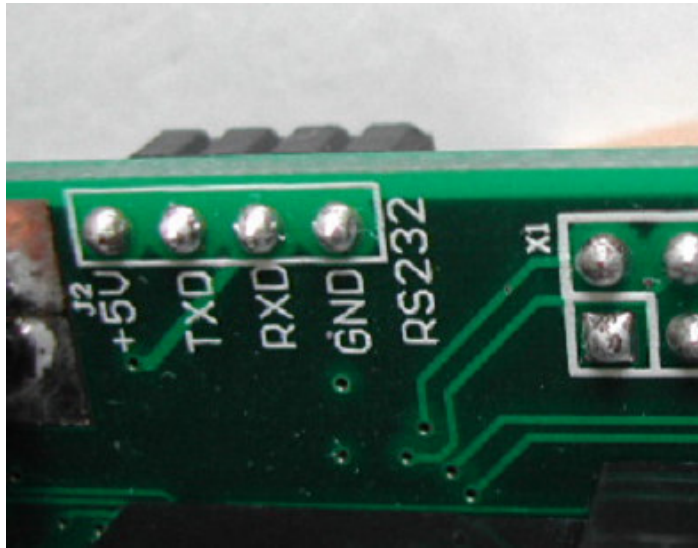


FS84 ethFAM RS-232 connection to PC and Demo program

J2 of FS84 ethFAM is for RS-232 connection



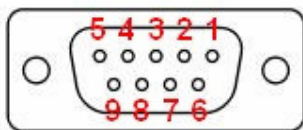
+5V = +5V power supply (can get this from +5V of USB port)

TXD = RS-232 Transmit of ethFAM(connect it to pin 2 of Female PE-9)

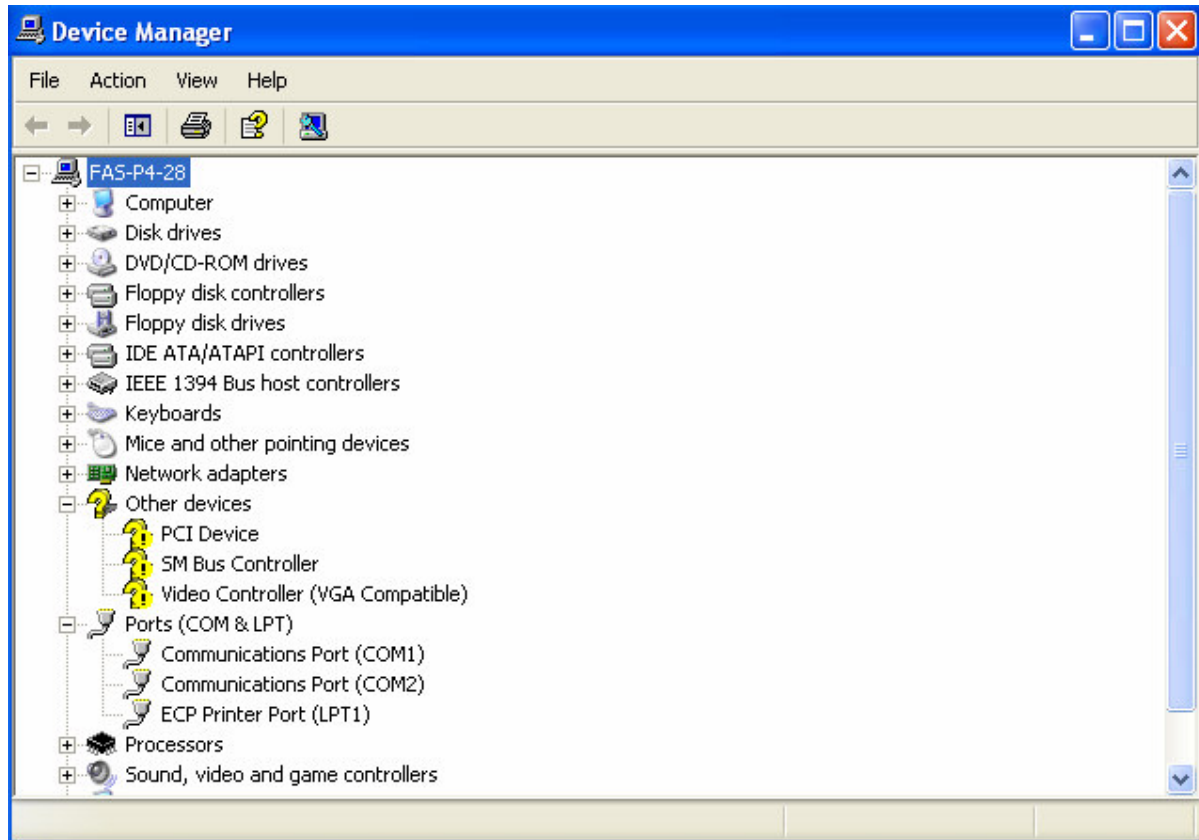
RXD = RS-232 Receive of ethFAM(connect it to pin 3 of Female PE-9)

GND = Ground (connect it to pin 5 of Female PE-9 and the power ground of +5V supply)

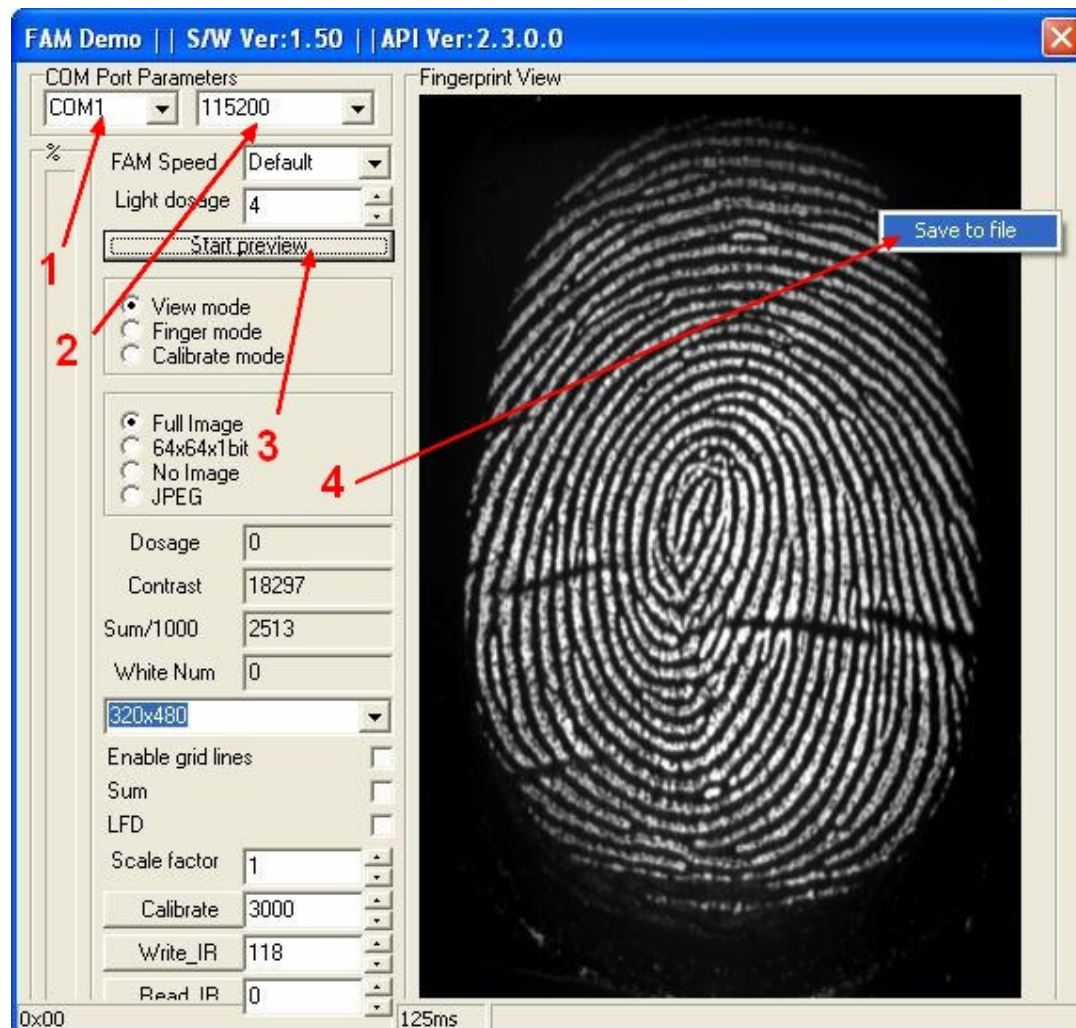
Female PE-9 Connector



If you do not know what the COM port number is, you can go to Windows Device Manager and check.



Go to the folder “FS84 ethFAM demo program” and run “fam.exe”. Then the following window will be showed.



Please do the following according the number in the above screen capture:

1. Use this pull down menu to select the correct COM port used.
2. Use this pull down menu to select COM port speed 115200 bit per second.
3. Put the finger on FS84 ethFAM scanning window. Then press “Start preview” (The word “Start” will be changed to “Stop”) and hold the finger. A raw fingerprint image will be shown in the right hand side of the demo program window under the “Fingerprint View”. Press the “Stop” button will keep the fingerprint image in the window. (Sending image process will stop only after the whole image is sent. So, it will not stop immediately after press the “Stop” button. Please WAIT the program stop after you press “Stop” button ONCE.)
4. Then point to fingerprint image. Right click on mouse. “Save to file” will be shown. Press it and the BMP format fingerprint image (temp.bmp) will be stored to the C:\ of the PC.